

Chicago

TAG LABEL



Warehouse Solutions

2 Table of Contents

Warehouse Intro	3	Signage	10
Fulfillment Solutions	4	Flat Anging Signs	10
Multiplex & Integrated Form Labels.....	4	45°Hanging Signs.....	10
Preprinted LPN Labels.....	5	Z-Shaped Hanging Sgns	10
Pallet Tags, Lock Out Tags, Linerless.....	6	Aisle Signs.....	11
Thermal Solutions	7	Teepee Aisle Signs.....	11
Direct Thermal.....	7	Hanging Cube Signs.....	11
Thermal Transfer.....	7	Aluminum Signs	11
Ribbons.....	7	Dock Door Signs.....	12
Rack Labeling	8	Large Format Signs	12
Single Location Rack Labels.....	8	Safety Signs	12
Multi-Level Totem Rack Labels.....	8	Floor Labeling & Striping	13
Retro-Reflective Labels.....	8	Floor Label Solutions.....	13
Freezer Grade Labels.....	9	Floor Graphics & Line Striping.....	14
Magnetic Labeling	9	Beam & Bin Protect	15
PVCBackLabeling.....	9	Installation Services	16
Rack Capacity & Flue Labels.....	9		



Chicago Tag & Label
2501 Commerce Drive
Libertyville, IL 60048
contact@chicagotag.com
www.chicagotag.com



Warehouse

Warehouses may deal with hundreds or even thousands of items making their way throughout their facilities daily. Meanwhile, warehouse and distribution companies are continually faced with shifting consumer expectations, supply chain ups and downs and an extremely competitive warehouse market.

Today's warehouses need to ship more items, faster, with less space and fewer employees. To compete, even small to medium-sized companies need to improve efficiencies. Warehouse signs and labels are a critical part of this efficiency.

Successful warehouse businesses rely on accurate labels and signs to locate products and packages, track inventory, and provide important information.

The Benefits of a Well Labeled Warehouse

Faster Processes: With a proper labeling system, operations become streamlined and products make it to consumers faster.

Fewer Mistakes: Correctly installed labels and signs lead to fewer picking errors, saving time and money.

Safer Workplace: Warehouse signs tell employees and visitors where to go, safe places to walk, and indicate forklift crossings.

Real-Time Tracking: Advanced tracking technologies like RFID and barcode scanning provide real-time visibility into inventory levels, reducing the risk of stockouts or overstocking.



Trust The Warehouse Labeling Experts

Chicago Tag & Label combines a thorough understanding of warehouse operations, barcode scanning and label production to provide a customized warehouse label and sign solution. We help you work through the details of your warehouse labeling needs so you have more time and energy to focus on what you do best.





Fulfillment Solutions

Multiplex™ Enclosed Packing List Solution

Multiplex™ reduces steps in your fulfillment process by simultaneously printing and stacking your critical shipping documents from a single label roll, eliminating the need to match the packing list and shipping label, reducing errors and preventing incorrect shipments.

Flexible and customizable, this patented process can include 2, 3, or 4+ layers to incorporate additional packing lists, gift messages, Terms and Conditions or a return label.

Personalize the label size and pre-printed information to communicate return instructions or promotions on the front and back of your labels.

Keep up with the pace of today's fulfillment process, improve efficiency and reduce labor expenses all while enhancing the end-user unboxing experience.

Integrated Form Labels

Eliminate steps in your fulfillment process by combining your shipping label and packing list into a single document. This all-in-one shipping solution prevents redundancies, reduces the amount of shipping supplies needed, streamlines your processes, and increases order accuracy. Simply print, label, and ship! Your forms can be pre-printed with your custom graphics or branding, enhancing the customer experience.

The convenience and simplicity of a custom-integrated label make it useful in a wide range of applications. These form labels can serve as:

- Integrated shipping labels
- Packing slips
- Barcode labels for tracking
- Invoices
- Customized labels with company logos
- Branded gift cards
- and more





Preprinted LPN Labels

Maximize your efficiency and effectively track inventory inside or between your distribution facilities with pre-printed LPN Labels.

Unlike slow, labor intensive print-on-demand processes, custom manufactured LPNs can be applied quickly, right out of the box.

Using in-line verification and sequence management, we will manufacture your labels with the utmost accuracy and the industry's shortest lead times.

By using custom-designed, pre-printed labels, you can swiftly assign unique identification numbers to cartons or entire pallets, distinguish between different priority levels, and ensure accurate data capture in your picking process.



Available in a wide variety of materials and colors, your LPN labels can be made to withstand the harshest environments and provide fast, reliable scanning.





Pallet Tags

Easily stage and prioritize pallets using high quality, high visibility pallet tags. Ideal for fast paced environments, FIFO operations or in high volume facilities where multiple pallets may be located in one area. These tags are custom designed to meet your particular requirements. With bright, easily identifiable colors, custom printed text and graphics. Optional barcodes for added traceability to streamline your operations and greatly enhance productivity.



Lockout Tags

Ensure your facility is OSHA compliant with custom lockout tags. Lockout tags provide crucial warnings that protect workers operating and repairing potentially hazardous machinery. Available in custom and standard sizes, as well as various colors and patterns, these tags help reduce the potential for accidental injury and property damage.



Linerless Labels

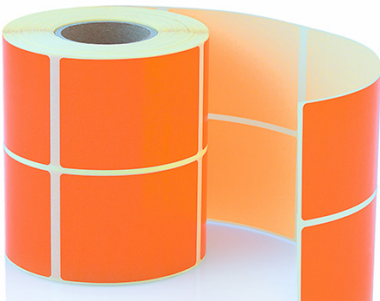
Chicago Tag & Label offers eco-friendly linerless labels. Linerless labels adhere to themselves instead of using a silicone-based liner. With a release coating applied to the top of the facestock, these labels are easy to peel off the roll but readily adhere to the desired surface. These types of labels provide you with a sustainable, cost-effective, and customizable solution.





Thermal Solutions

We provide a wide array of direct thermal and thermal transfer solutions, customizable to fit your needs. Our options include various sizes, flood coating, color borders, and color lines. Available in both standard and custom sizes, our extensive selection of face stocks, adhesives, and finishing options ensures we can deliver specialty labels tailored to your specific applications. Whether you need sheets, rolls, or fanfold formats, our technical team collaborates with you to find cost-effective solutions that meet your performance expectations. Our direct thermal labels, thermal transfer labels, and ribbons are compatible with most major printer brands, including Zebra, Sato, Datamax, Toshiba, and more.



Direct Thermal Labels

Direct Thermal labels are a simple, cost-effective labeling option that does not require ribbons. They are best suited for short-term applications like shipping labels, receipts, and warehouse labels.

Thermal Transfer Labels & Ribbons

Thermal Transfer labels provide a reliable, versatile, and cost-effective solution for various labeling needs. These labels are durable and are ideal for applications requiring long-term readability.

Not all ribbons are created equal! We offer a wide range including platinum wax, wax-resin and full resin options. Many of our ribbons are in stock for immediate delivery.



Rack Labeling

Chicago Tag & Label utilizes all types of barcodes including Code 39, Code 128, and QR codes.



Single Location Rack Labels

- Custom location labels printed with variable data
- Wide variety of materials and adhesives for any environment
- Laminated for added durability
- Multiple color options for added efficiency



Multi-Level & Totem Rack Labels

- Contains the data for multiple locations within a single label
- Designed for man-down operations eliminating the need for long range scanning.
- Often used in conjunction with individual rack location labels
- Vertical and horizontal options



Retro-Reflective Labels

- Retro-reflective material for long distance scanning
- Perfect for high level rack locations
- Optional wrap around label for easier targeting

Freezer Grade Labels

- Suitable for application temperatures as low as -10° F, service temperature -65° F
- Water resistant to prevent peeling due to moisture and humidity
- Freezer-grade magnets and PVC placards are also available



Magnetic Labeling

- Magnetic label construction for easy repositioning and removal
- Allows for location flexibility
- Suitable for any environment- even deep freezers
- Magnets are available in various thicknesses depending on the application
- Image shows a rack label on a magnet



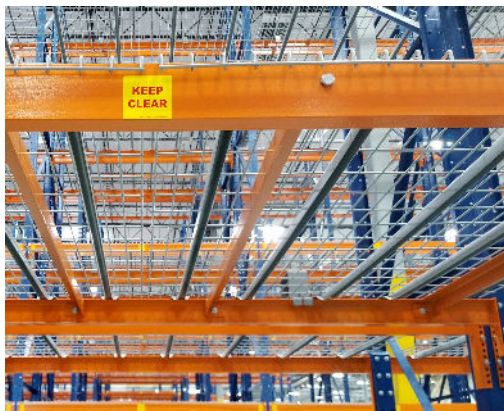
PVC Mounted Labeling

- Provides added durability
- Great for mounting on racking uprights
- Adhesive and magnetic options
- Image shows a vertical totem mounted on PVC



Rack Capacity & Flue Labels

- Communicate load capacity and space limitations
- Pre-printed or with blank space
- Color options available
- Conforms to ANSI and OSHA regulatory standards
- Flue labels for space clearances
- Stay compliant with local fire codes



Signage

Flat Signs

- Identify locations along a wall or at end of aisles
- Single and double sided for hanging options
- Single-sided for wall, door and end of aisle mount
- Retro reflective option for long distance barcode scanning
- Mounting options include holes, adhesive and magnets.



45° Hanging Signs

- 45° angle for easy scanning
- Suspended from cable or conduit
- Retro reflective option for long distance barcode scanning
- Popular for bulk location areas and shipping lanes



Z-Shaped Hanging Signs

- Suspended from cable or conduit
- Double sided bulk location sign
- Retro reflective option for long distance barcode scanning





Aisle Signs (90° Bend)

- For use on rack uprights, shelves and bays
- Easily identify aisles
- Single or double sided
- Color options available
- Mounting options include holes, adhesive and magnets



Teepee Aisle Signs

- Mark back-to-back racks
- Easily identify aisles
- Single or double sided
- Color options available
- Mounting options include holes, adhesive and magnets



Hanging Cube Signs

- Perfect for identifying zones
- Information printed on 4 sides
- 360° View
- All hardware included
- Custom sizes available



Aluminum Signs

- Durable indoor or outdoor signs
- Weather/Rust resistant
- Reflective and color options available
- Ideal for outdoor dock signs



Dock Door Signs

- Clearly identify loading doors and driving entrances
- Available for indoor or outdoor use including PVC and aluminum
- Use with text, numbers or barcodes
- UV resistant
- Color options available



Large Format Signs

- Large signs to identify zones within the facility
- Easily readable from a distance
- Can include text, barcodes, logos and other graphics
- Color options available



Safety Signs

- Warn workers and visitors of hazards
- Apply to doors, walls and equipment
- Full-color to grab attention
- Conforms to ANSI and OSHA regulatory standards





Floor Label Solutions

Floor Label Protectors

Floor labels have never held up well to the rigors of pedestrian and vehicle traffic. Today, there's a new impact resistant solution to protect your floor labels.

Our label shields are self-adhesive and have a clear window which allows you to cover and protect labels on floors, doors, and walls. This unique product features a textured, anti-slip surface that provides extra safety and durability.

A Multi-Surface Solution

Warehouses, retail spaces, or storage facilities can use label shields on:

- Interior & Exterior Doors
- Bulk Locations
- Staging Lanes/Areas
- Totes
- Walls & Walkways
- Stairways & Shipping Docks

contact@chicagotag.com | 800.826.8260

Stock Sizes

Label shields are available in half letter and full letter sizes.

Half Letter Size:

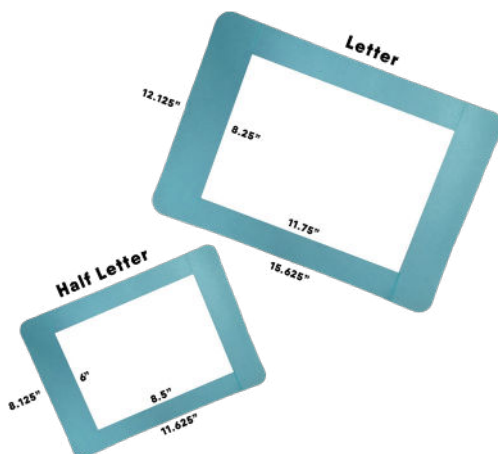
Overall - 8.125" L x 11.625" W

Opening - 6" L x 8.5" W

Letter Size:

Overall - 12.125" L x 15.625" W

Opening - 8.25" L x 11.75" W



14 Floor Labeling & Striping

Floor Graphics

- Custom printed vinyl graphics
- Communicate important messages to employees and visitors
- Designed for industrial environments
- Designed to withstand forklift traffic



Line Striping

- Complete line striping services are available for bulk locations, loading docks, aisles, and traffic lanes
- Visible floor marking improves safety and organization in almost any industrial environment
- Ideal for marking aisles, passageways and storage locations. Identify egress paths both indoor and outdoor
- Available in many colors to meet OSHA and 5S color requirements
- Long-lasting paints, often resin based epoxy, are used to withstand the harsh environment of a busy warehouse
- Services include:
 - Floor Preparation- Etching and shot blasting to remove existing line striping and prepare the floor for the new striping
 - Line Striping Installation- Complete installation of all line striping based on CAD drawings provided. Temporary floor tape and permanent options available





Beam Protect

Refresh & Protect Your Racking

Whether your beams are heavily used or brand new, these specially designed colored cover-up labels can be applied directly over any existing labels and damaged areas, completely covering them and protecting against future wear.

Effortless, Mess-Free Label Removal

Once the cover-up labels are permanently installed on your racking, simply apply your location labels on top of it. Now, when you need to move stock or update a product, you can easily remove the location labels quickly and completely, without leaving any residue. These labels will let you say goodbye to expensive magnets and the hassle of scraping old labels, saving you time & money!

Bin Protect

Refresh & Protect Your Bins

The Tote Bin Protect is a label holder placed on the tote bin. It features a release coat so regular paper LPN labels can be applied and later removed from the tote leaving no mess. This eliminates ugly label upon label build up and the need to scrape old labels from the tote.





Installation Services

A properly labeled warehouse is vital for speedy and accurate warehouse operations. Taking on the challenge of designing, printing and installing thousands of rack labels, overhead signs and interior or exterior dock door signs is a lot of work to add to an already busy operations team. Working with a professional team of installers allows you to focus on your duties while still improving your facility's work flow.

Benefits of Professional Label Installation

Save Time: Our warehouse labeling experts can complete warehouse labeling more quickly.

Minimize Disruptions: Using our dedicated team means your team doesn't need to take valuable time away from their regular roles and responsibilities.

Ensure Quality & Scannability: Avoid mislabeled racks and bins and unscannable labels or mislabeled racks and bins.

Avoid Costly Mistakes: Small errors can lead to big issues. Professional installers help avoid these problems.

No Additional Training: Leaning on professional installers means you don't have to train your staff on how to properly install labels and signs.

Complete Solution: Get everything you need, including the labels, materials, equipment and labor.

Guaranteed Warehouse Label Installation

The most important part of a warehouse label installation? Doing it right the first time.

At Chicago Tag & Label, our team of dedicated professionals is known for accurately completing warehouse label installation projects in substantially less time than it would take for an in-house team. The best part of using Chicago Tag & Label as your professional warehouse label and sign installation team: we 100% guarantee our work. With Chicago Tag & Label you can rest assured that your warehouse will be properly labeled, as quickly as possible!



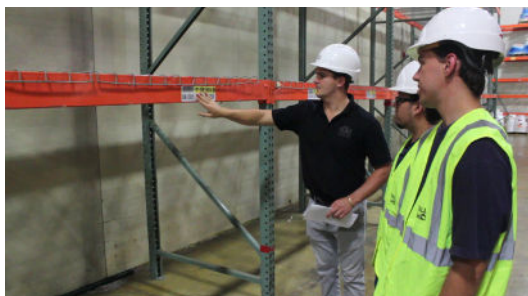
Ask your sales representative to *schedule* a site survey with you today!

Chicago Tag & Label is your go-to partner for warehouse labeling solutions because:

A Complete Solution

At Chicago Tag & Label, we believe proper installation is a crucial part of any warehouse labeling project. That's why we provide every install project with an on-site installation manager to be your point person managing the process from beginning to end.

- We bring our own team, you don't need to worry about hiring someone else to install the labels and signs.
- Our installers work closely with site management to ensure all our services meet your expectations. Our team keeps in constant communication to ensure 100% accuracy.
- At Chicago Tag & Label, we design and produce the labels and signs. Who better to install them? Let us help you streamline your warehouse operations with this valuable service.



All installation projects include the materials, labor and equipment necessary for completion. Our team will coordinate delivery of all supplies and equipment to the site prior to installation.





Chicago

TAG LABEL

www.chicagotag.com | 800.826.8260